

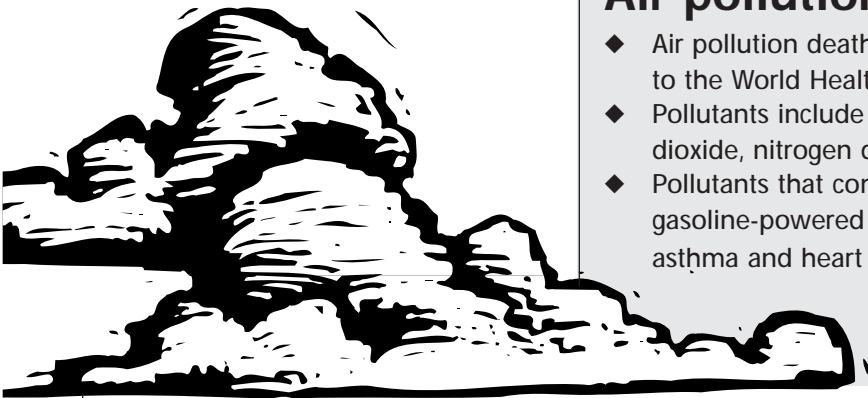
Earth Day

April 22nd

Did you know?

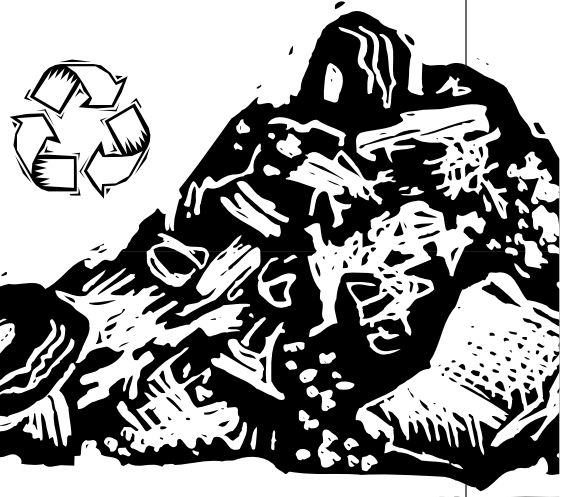
Air pollution

- ◆ Air pollution deaths exceed traffic fatalities by three to one according to the World Health Organization.
- ◆ Pollutants include chemicals such as carbon monoxide, ozone, sulfur dioxide, nitrogen dioxides as well as airborne particles.
- ◆ Pollutants that come mostly from the burning of fossil fuels and gasoline-powered vehicles can reduce lung function and aggravate asthma and heart conditions.



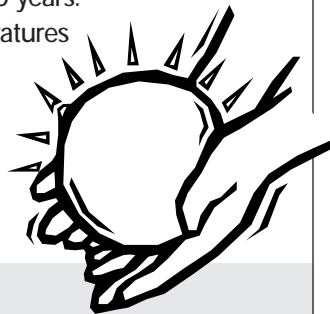
Waste

- ◆ Food and yard waste make up 26 per cent of all waste – municipal recycling programs can virtually eliminate organic wastes going to landfills.
- ◆ Garbage is a gold mine of rich organic material, valuable metals, paper produced from our forest, glass and plastics made from non-renewable resources.
- ◆ Recycling, reducing and reusing means we slow down the rate at which the Earth's precious natural resources are depleted.



Climate change

- ◆ The 20th century was the warmest globally in 600 years.
- ◆ Most experts warn that warmer Canadian temperatures will lead to severe weather with droughts, winter storm and tornadoes.
- ◆ The Kyoto Protocol will help curb climate change by reducing greenhouse gas emissions and create healthier communities.



Water

- ◆ Each day our human body must replace 2.4 litres of water, some through drinking and the rest from food we eat.
- ◆ During summer, about half of all treated water is sprayed onto lawns.
- ◆ One litre of oil can contaminate up to two million litres of water.



Pesticides

- ◆ Pesticides poison the food chain, contaminate water supplies, and are implicated in the decline of some species of life.
- ◆ Pound for pound of body weight, children consume considerably more pesticides than adults.



- ◆ Exposure to low levels of some pesticides over time can cause cancer, nervous system impairment, immune suppression, hormone disruption, infertility, and behavioural and developmental problems.



ENVIR ACTION

Every Day is Earth Day

Help us raise environmental awareness for **Earth Day**

April 22nd

- ◆ Ask a young person in your family or your community to create a poster about what the environment means to them.
- ◆ Use the drawing as an opportunity to discuss how important our environment is and, in particular, what the environment means to you.
- ◆ Talk about possible actions and commitments your community could take to make our towns and cities healthy and sustainable. (See the back page for facts on the environment.)

Here's what CUPE's National Environment Committee will do with poster submissions:

- ◆ All entries will be eligible to win nifty environmentally-friendly prizes!
- ◆ Your drawing could appear on cupe.ca – CUPE's website.



Contest deadline

Friday, May 4, 2007

Mail your poster to:
CUPE's Health and Safety Branch
21 Florence Street
Ottawa, Ontario K2P 0W6

Kids Poster Contest

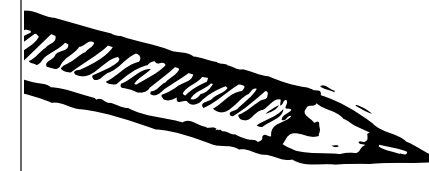
Use the attached page, or any drawing paper, to create your environment poster.

Ideas could include drawings about any of the environmental challenges facing our planet:

- air pollution
- climate change
- waste
- water
- pesticides
- any issue important to you

Draw some of the actions we could take to protect our environment. Ways to care for the Earth could include:

- No pesticides in my park!
- Walk, don't drive.
- Encourage community recycling.
- Use mass transit.
- Energy efficient homes and buildings (turn down the heat).
- Renewable energy sources (energy from the sun, the wind, the water).
- Add a slogan or short story or essay to go with your drawing. Use a separate sheet of paper if necessary.



Extra copies available from: cupe.ca/environment, or
CUPE Health and Safety Branch, 21 Florence Street, Ottawa, ON K2P 0W6,
E-mail: enviro@cupe.ca Fax: (613) 233-3438, Phone: (613) 237-1590

Large empty rectangular area for a photograph or drawing.

First Name:

Age:

Grade:

City:

Province:



Contest deadline

Friday, May 4, 2007

Mail your poster to:
CUPE's Health and Safety Branch
21 Florence Street
Ottawa, Ontario K2P 0W6

Have your parent or guardian provide
the following information:

Parent's/Guardian's Name: _____

Parent's/Guardian's Signature: _____

Mailing Address: _____

City: _____ Province: _____

Postal Code: _____

Telephone: _____

Home: () _____

Work: () _____

E-mail: _____

INFO

Earth Day
April 22nd

